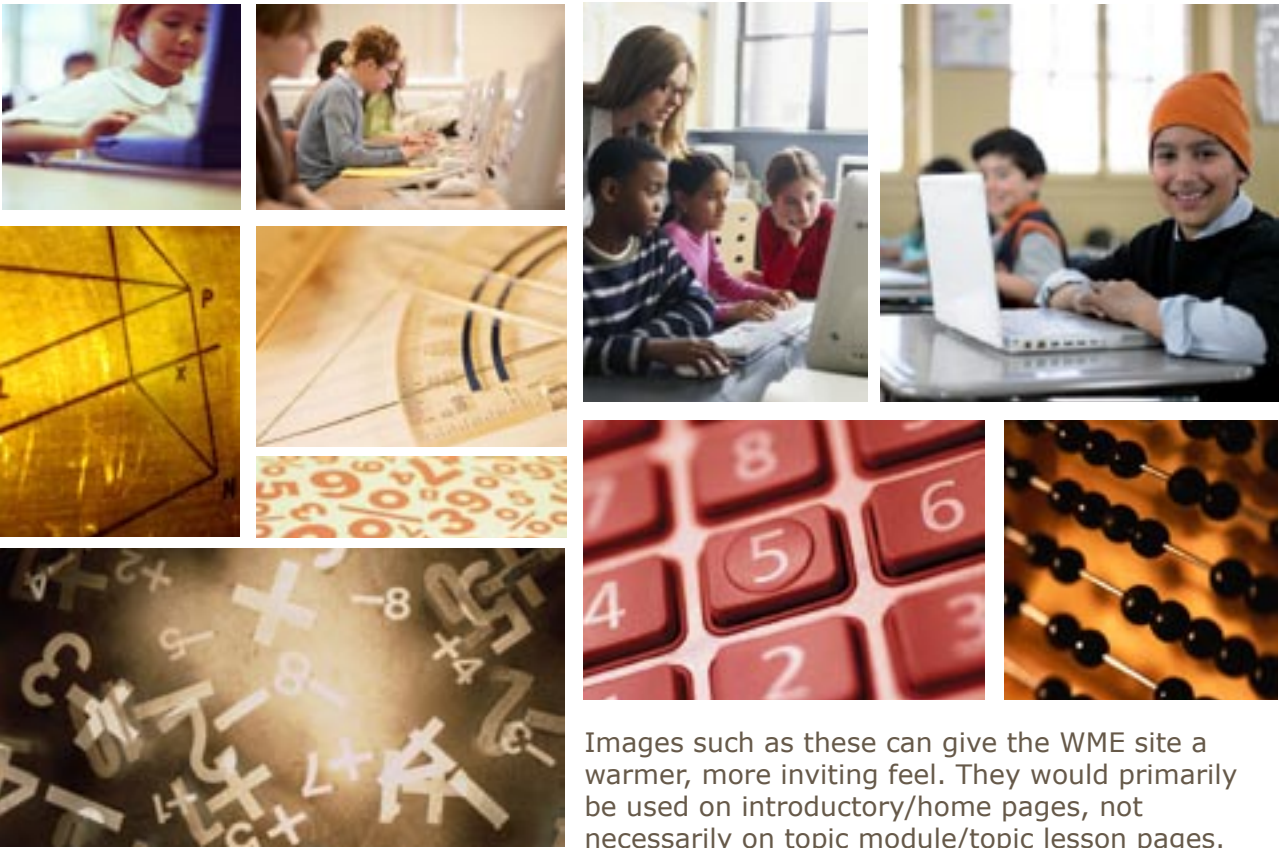


Color Palettes



The concept behind the color choices was to limit the basic palette to cooler, neutral colors to offset imagery such as photos and illustrations that will be added along the way. However, brighter/warmer tones can be introduced on pages that students will be viewing.

Images



Images such as these can give the WME site a warmer, more inviting feel. They would primarily be used on introductory/home pages, not necessarily on topic module/topic lesson pages.

Beginning Ideas for Interface and Navigation

Will there be one homepage for both users of WME and individuals looking for more information? If so, how will the navigation function?


Option 1

WME | Web-based Mathematics Education

Welcome!

WME is a modern Web-based Mathematics Education system that delivers classroom-ready lessons to teachers and students. The lessons are interactive, fun, and very educational.

The advantages and effectiveness of WME will be clear as you explore what this site has to offer.



Contact

Teacher Login

Password

What is WME?	School Sites	People	Research and Development	Milestones	Resources
Overview			Components		
Middle School Project			System Integration Notes		
WME Difference			Website Design		
			Publications		

Option 2

WME | Web-based Mathematics Education

Contact

Welcome!

WME is a modern Web-based Mathematics Education system that delivers classroom-ready lessons to teachers and students. The lessons are interactive, fun, and very educational.

The advantages and effectiveness of WME will be clear as you explore what this site has to offer.



What is WME?

Individual School Sites

People

Research and Development

Resources

(Teachers could login from the "Individual School Sites" page)

WME | Web-based Mathematics Education

Welcome!

WME is a modern Web-based Mathematics Education system that delivers classroom-ready lessons to teachers and students. The lessons are interactive, fun, and very educational.

The advantages and effectiveness of WME will be clear as you explore what this site has to offer.

